



Currently the fastest 3D printer in the world



Most important features



Uniz NBEE

Its printing speed is currently unbeatable – it prints 6 aligner models in approx. 5 minutes*. Its patented liquid cooling system ensures a stable printing process with very high accuracy.

The patented Low Force Stereo Peel technology of the resin tank in combination with a collimated light source with high power (16 mW/cm², 95 % uniformity) and the active monitoring of the reaction temperature create ideal conditions for fast and high-quality results.

* Depending on height of model



Uniz SLASH 2 PLUS

SLASH 2 PLUS is a further developed model of the UNIZ desktop printer and also impresses with its speed. In the laboratory, values of up to 250 mm/hour are achieved. In other words, it prints 6 aligner models in about 18 minutes*.

Like the NBEE, the SLASH 2 PLUS also features the patented liquid cooling system, which ensures a stable and reliable printing process. Thanks to an even more powerful LED light source (12000 mW/cm²) compared to the previous model, almost all dental resins available on the market, e.g. for direct print aligners, dental models, surgical guides and also IDB trays and nightguards, can now be processed on the SLASH 2 PLUS.

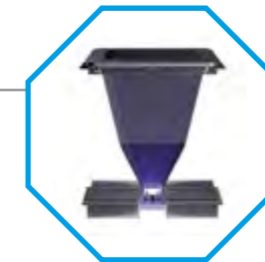
* Depending on height of model



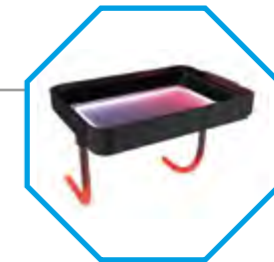
High Efficiency Liquid Cooling
Maintain system temperature below 40 °C



Micro-Stereo Composite
Patent low-force stereo peel technology



High-power collimated light source
16 mW/cm² high power, 95 % uniformity



Resin Temperature Control System
Maintain optimal resin temperature

Technical data

		NBEE	SLASH 2 PLUS
PRINTING	Printing Technology	LCD Stereo Lithography	LCD Stereo Litography
	Build volume	192 x 120 x 180 mm 7.5 x 4.7 x 7.1"	192 x 120 x 200 mm 7.5 x 4.7 x 7.9"
	XY-resolution	49.8 µm	49.8 µm
	Maximum accuracy*	± 10 µm	± 10 µm
	Layer thickness (Z-resolution)	10 – 200 µm (25, 50, 100 recommended)	10 – 200 µm (25, 50, 100 recommended)
	Separation Mechanism	Stereo-Polymer-Multi-Layer-Film-Peel	Polymer-Film-Natural-Peel
	Support	Uniz smart support technology	Uniz smart support technology
	Printing speed**	6 aligner models in ca. 5 minutes	6 aligner models in ca. 18 minutes
HARDWARE	Dimensions / weight	380 x 380 x 1230 mm [LxWxH] 15 x 15 x 49" 60 kg 132 lb	350 x 400 x 530 mm [LxWxH] 14 x 16 x 21" 15 kg 33 lb
	Operating temperature	18 – 28 °C 64 – 82 °F	18 – 28 °C 64 – 82 °F
	Power requirements	110 V, 6A, 60 Hz 220 V, 3A, 50 Hz	100 – 240 V, 6A, 50/60 Hz
	Optical system	Collimated light source (4. Generation)	Patented LED Array Light Engine
	Gehäuse	Cast Aluminum and CNC Sheet Metal	Cast Aluminum and CNC, Injection Molding
	Connectivity	USB Flash drive, Wi-Fi, Ethernet	USB Flash drive, Wi-Fi, Ethernet
	Casing	7" Touch Screen	4.3" Touch Screen
SOFTWARE	System requirements	Windows 7 and up (64-bit only), Mac OS X 11.4 and up (64-bit only), 16GB RAM, OpenGL 2.1, Discrete Graphics	Windows 7 and up (64-bit only), Mac OS X 10.7 and up (64-bit only), 16GB RAM, OpenGL 2.1, Discrete Graphics
	Sliceware features	Advanced Model Repair Ultra Large File Support (1 GB+)	Advanced Model Repair Ultra Large File Support (1 GB+)
	Compatible formats	STL, OBJ, AMF, 3MF	STL, OBJ, AMF, 3MF, ZPRJ

* Data was obtained with aligner models specifically defined for testing purposes. Results with other models may vary.

** Results with special speed testing models (other models may lead to different results).

Dental Slicing Software



- Intelligent scan repair feature
- Smart automated support function
- High-speed Modell-Slicing and data export
- Customizable editing functions

Integration & Partnership



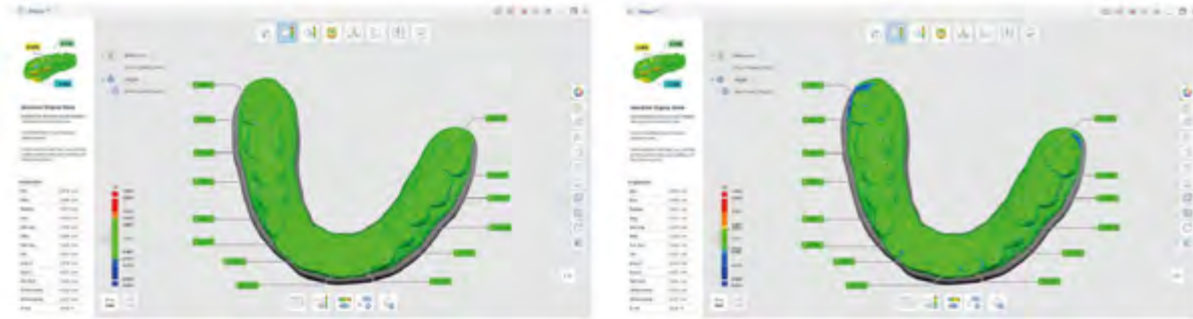
Seamless integration with leading providers of 3D-scanning and CAD/CAM solutions

3shape

MEDIT

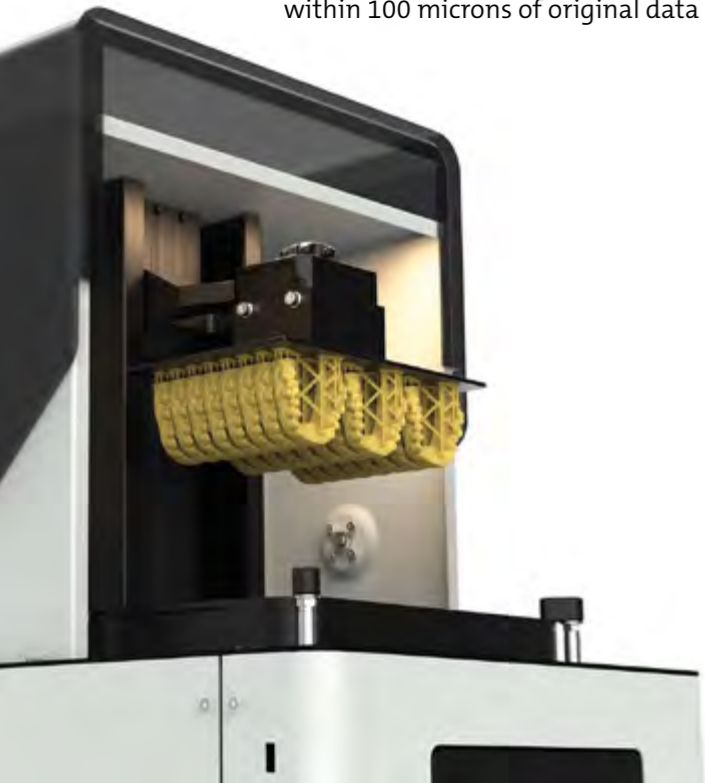
exocad

High precision models printed with Uniz NBEE



99.6% of data points
within 100 microns of original data

95.05% of data points
within 50 microns of original data



Surface at 50 microns
Z-resolution

Ordering details

Order No.	Content	Description
999-4000	1	Uniz NBEE 3D-Printer incl. resin tank, replacement for LCD module, protective foils for the projector screen, installation tools, 1 bottle of model resin, 220 V, 3A, 50 HZ
999-4002	1	Uniz NBEE 3D-Printer incl. resin tank, replacement for LCD module, protective foils for the projector screen, installation tools, 1 bottle of model resin, 110 V, 6A, 60 HZ (USA/Japan/LatAm)
999-4001	1	Uniz NBEE Spare tank
999-4010	1	Uniz SLASH 2 PLUS 3D-Printer incl. resin tank, protective foils for the projector screen, installation material and tools, 1 bottle of model resin, 100–240 V, 6A, 50/60 HZ
999-4011	1	Uniz SLASH 2 PLUS Spare tank
999-4012	1	Uniz SLASH 2 PLUS Lid for resin tank



Hersteller:

Uniz Technology LLC
9400 Activity Rd Ste L
San Diego, CA 92126, US

Distributed by:

FORESTADENT
Bernhard Förster GmbH
Westliche Karl-Friedrich-Straße 151
75172 Pforzheim (Germany)
Phone: +49 (0) 7231 459-0
Fax: +49 (0) 7231 459-102
www.forestadent.com
info@forestadent.com

**FORESTADENT**[®]
GERMAN PRECISION IN ORTHODONTICS