

# Brackets Bands Tubes

Precision engineered and manufactured in the U.S.A.



Actual patients, William and Ethan, wearing G&H miniPrevail® brackets.

## MINIPREVAIL® BRACKET SYSTEM



### Mini Design with Maximum Control

- 17-4 Stainless Steel
- Metal Injection Molded (MIM)
- Chamfered Slot Entrance
- Full Rotational Control
- Sweeping Tie Wing Undercuts
- Center Scribe Line
- Color Enhanced I.D. Marks
- Low Profile
- Rhomboidal Shape
- 80 Gauge Mesh Bonding Base
- Anatomical Bases for Secure Bonds

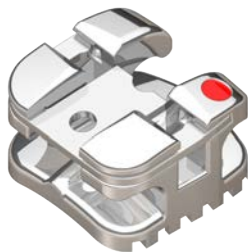
## VAPOR™ CERAMIC BRACKET SYSTEM



### Aesthetics, Strength and Safe Secure Bonds

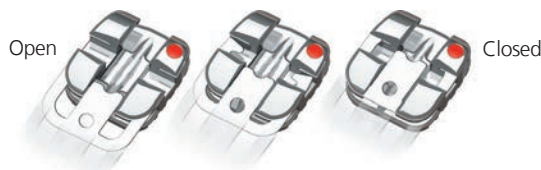
- Ceramic bracket system
- Translucent Appearance
- Injection molded CIM manufacturing
- Color enhanced I.D. Marks
- Expanded tie wing undercuts
- Vapor's Unique "Portal" Bonding Base
- Adhesive Flows through Portals for Secure Mechanical Bonds

## AGILITY® SELF-LIGATING PASSIVE SYSTEM



### NiTi Slide Clip for Efficiency and Stability

- Easy Opening Nickel Titanium Clip
- Clip can be fully removed and tie wings engaged
- Dual Locking Mechanism
- Center Scribe Line
- Color-Enhanced I.D. Marks
- Compound Contour Bases
- Single Piece MIM Construction



## VIPER™ TUBES CONVERTIBLE AND NON-CONVERTIBLE



- 4.2mm Mesial/Distal
- Comfort Ball Hook
- Full Funneled Entrance
- 80 Gauge Indented Mesh Base
- Low Profile Design
- Easy Grasp Positioning Guides

80 Gauge Mesh Bonding Base

## MOLAR AND BICUSPID BANDS

- Precision Shaped Tooth Anatomy for a Secure Fit
- Tempered for Efficient Seating
- Etched Interior Surface for Secure Adhesion
- Laser etched I.D. markings



# Brackets | Bands | Tubes



Precision engineered and manufactured by G&H in the U.S.A.

[GHOrthodontics.com](http://GHOrthodontics.com)

**TOLL-FREE 866-573-9884**

[orders@ghortho.com](mailto:orders@ghortho.com)

G&H Orthodontics 2165 Earlywood Drive Franklin, IN 46131 U.S.A. 866-573-9884 U.S. & Canada +1 317-346-6655 International