



SURGICAL PROCEDURE OF M.A.S. SELF-DRILLING SCREW INSERTION

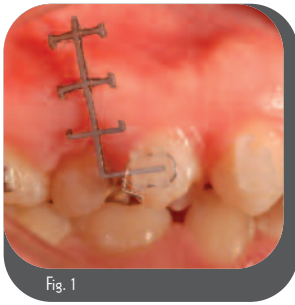


Fig. 1



Fig. 2

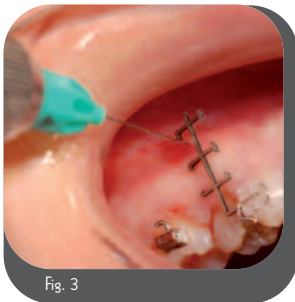


Fig. 3



Fig. 4

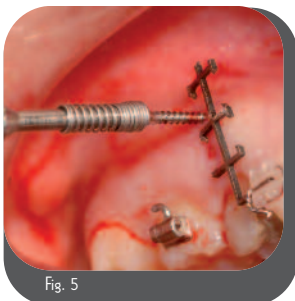


Fig. 5

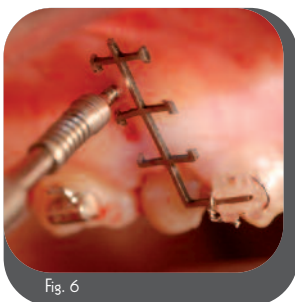


Fig. 6

STEP 1 (Preparation of the Anatomical Area to the Insertion of the Screw)

Once the anatomical interradicular area where the Miniscrew will be inserted has been identified, tie the surgical guide to one of the two brackets (the mesial or the distal with respect to the interradicular area), so that "window like" surface of the guide is placed on the gingival area of the site (fig. 1).

If needed, the guide can be adapted (cut or bent) to the anatomy of the gingival area.

STEP 2: (X-ray)

Make an periapical intraoral X-ray with the center square and use it to see the surgical guide square that corresponds to the safe bone zone where the miniscrew will be placed (fig. 2).

STEP 3: (Anesthesia)

Make a light and superficial anesthesia (only gingiva) leaving the teeth sensitive (fig. 3).

STEP 4: (Miniscrew Insertion)

Place the safety spring on the screwdriver (fig. 4), remove the miniscrew from the packaging bag and place it on the spring. The miniscrew are sealed in a sterile bag, therefore must not be touched by hands. Place the tip of the screw on the mucosa through the chosen window of the guide, screw it (maximum force 20 N.cm) and insert it in the bone (fig. 5-6). Once that the neck of the screw is inserted, stop to screw it (all the tapered part of the screw should be inside) and remove the guide. (fig 7)

STEP 5: (Application of the Tractive Force)

Before applying the desired traction (maximum 250 gr.) check the primary stability and make an intraoral X-ray to evaluate the final position of the miniscrew (fig 8).

Traction (by elastic chain or with Niti spring) should be immediately applied and can be placed directly on the head of the screw or through the hole on the screw head. A hook can be used to improve the gingival comfort or to achieve a better direction of traction (fig. 9). Usually after the placement of the screw the patient is free from negative inconveniences (pain, swelling o other inconveniences) thus it is not necessary the use of antibiotic or analgesic. The patient must take care of cleaning the area with the tooth brush and use for the first three days a mouthwash.

IMPORTANT:

In some cases the placement of the miniscrew by the long screwdriver (AM125XL) with the self-drilling procedure can be difficult:

1. If the insertion areas difficult are not easily reachable (posterior and palatal areas)
2. If it is hard to give the right angulations to the screw during its placement (posterior and palatal areas)
3. If the cortical areas is very dense

In these situations it is suggested to use Self-tapping the insertion method with the standard screwdriver (AM125L).

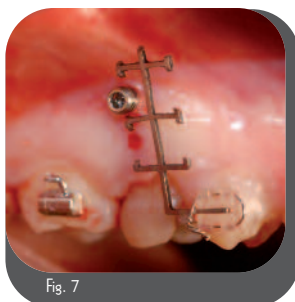


Fig. 7



Fig. 8

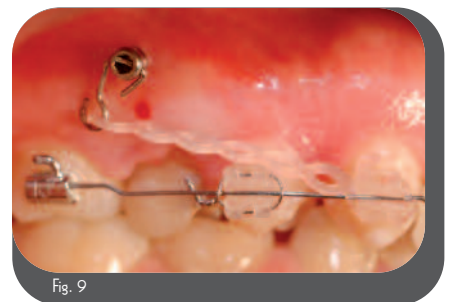


Fig. 9

**New
Self-drilling**



AM1311A

Max length: 11 mm
Head length: 2.6 mm
Neck: \varnothing 1.3 mm
Apex: \varnothing 1.1 mm



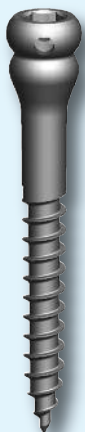
AM1509A

Max length: 9 mm
Head length: 2,6 mm
Neck: \varnothing 1,5 mm
Apex: \varnothing 1,3 mm



AM1511A

Max length: 11 mm
Head length: 2.6 mm
Neck: \varnothing 1.5 mm
Apex: \varnothing 1.3 mm



AM1514LA

Max length: 13,5 mm
Head/Neck length: 5.1 mm
Neck: \varnothing 1.5 mm
Apex: \varnothing 1.3 mm

COMPONENTS & KIT

DESCRIPTION	COMPONENTS	REF	AMKTAI	AMKTAK
Miniscrew self-drilling \varnothing 1,3 height 11 mm		AM1311A	1	3
Miniscrew self-drilling \varnothing 1,5 height 9 mm		AM1509A	1	3
Miniscrew self-drilling \varnothing 1,5 height 11 mm		AM1511A	1	1
Miniscrew self-drilling \varnothing 1,5 height 14 mm		AM1514LA	1	1
Surgical guide		AM250	2	4
Ball bur \varnothing 1,0 mm		AMPAL	1	1
Drill \varnothing 0,9 mm		AMFRESA1	1	1
Silicon stop ring for burs		AMRING1	2	4
Screwdriver mech. head 1,25 mm		AM125S	-	1
Screwdriver manual head 1,25 mm		AM125L	-	1
Screwdriver manual long, head 1,25 mm		AM125XL	1	1
Security spring for screwdriver manual		AM120M	2	2
Monkey Hook		A851-640S	-	-
Pin-Hook		A201-131	-	-
Gingival protection instrument		AM400	1	1
Surgical Tray 6 dishes		AMCAS	1	1

Spare parts: Miniscrews are sold in sets of one piece. Miniscrews in each set are packaged separately in sealed, sterile envelopes. The surgical equipment and surgical tray are sold one per package. Security Springs, Surgical Guides, Monkey Hooks, and Stop Rings are sold 10 per package. Pin Hooks are sold 20 per package.

Micerium S.p.A.

Via G. Marconi, 83 16030 Avegno (GE)

Tel. 0185 7887 880 • Fax 0185 7887 970

mail: hfo@micerium.it • www.micerium.com